

Teck Access Boundaries in the Elk Valley

2021-22



Promoting Safety On and Off Site with Defined Access Boundaries

For your protection and ours, please observe and follow the No Unauthorized Entry, No Shooting and No Hunting boundaries. Mining activities can start avalanches or rockslides without warning. Maps should be used for reference only. Please follow field signage at all times.

If wounded game crosses the safety boundary, do not follow. You must contact the site Loss Prevention for further instructions.

To prevent spread of noxious weeds please remain on designated trails with vehicles.

Thank you for your cooperation.

Site Information

Fording River Operations: 250.865.5016 or 250.425.4133

Greenhill Operations: 250.865.3098 or 250.865.3042.

Line Creek Operations: 250.425.3112

Elkview Operations: 250. 425.8899

Coal Mountain Mine: 250.425.7390

We Want Your Input

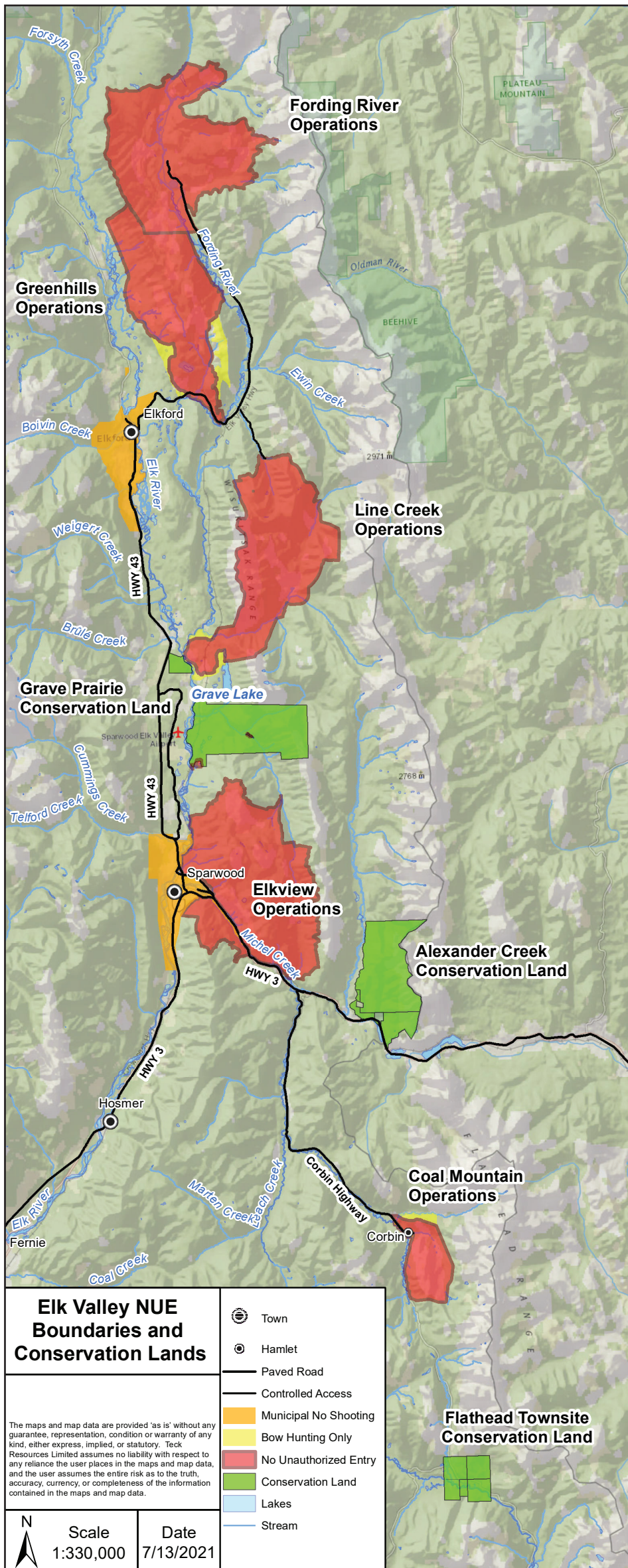
As backcountry users and outdoor recreationalists, your input on trail and land access located on or through Teck land is valuable. As we revisit our No-Unauthorized Entry Boundaries in relation to our evolving mine planning, we want to understand the areas of interest to you, and how we can help facilitate continued safe-use of these areas.

Join us for our annual backcountry user and outdoor recreationalist meeting on December 8, 2021.

For more information about upcoming engagement opportunities, please email communicationsteckcoal@teck.com, or watch for advertisements on Facebook or The Fernie Free Press or visit teck.com/coalmaps this September.

If you have any questions or feedback about our Elk Valley Operations, please contact Teck through the Feedback Mechanism by phoning toll-free to **1.855.806.6854** and leaving a message, or by sending an email to feedbackteckcoal@teck.com

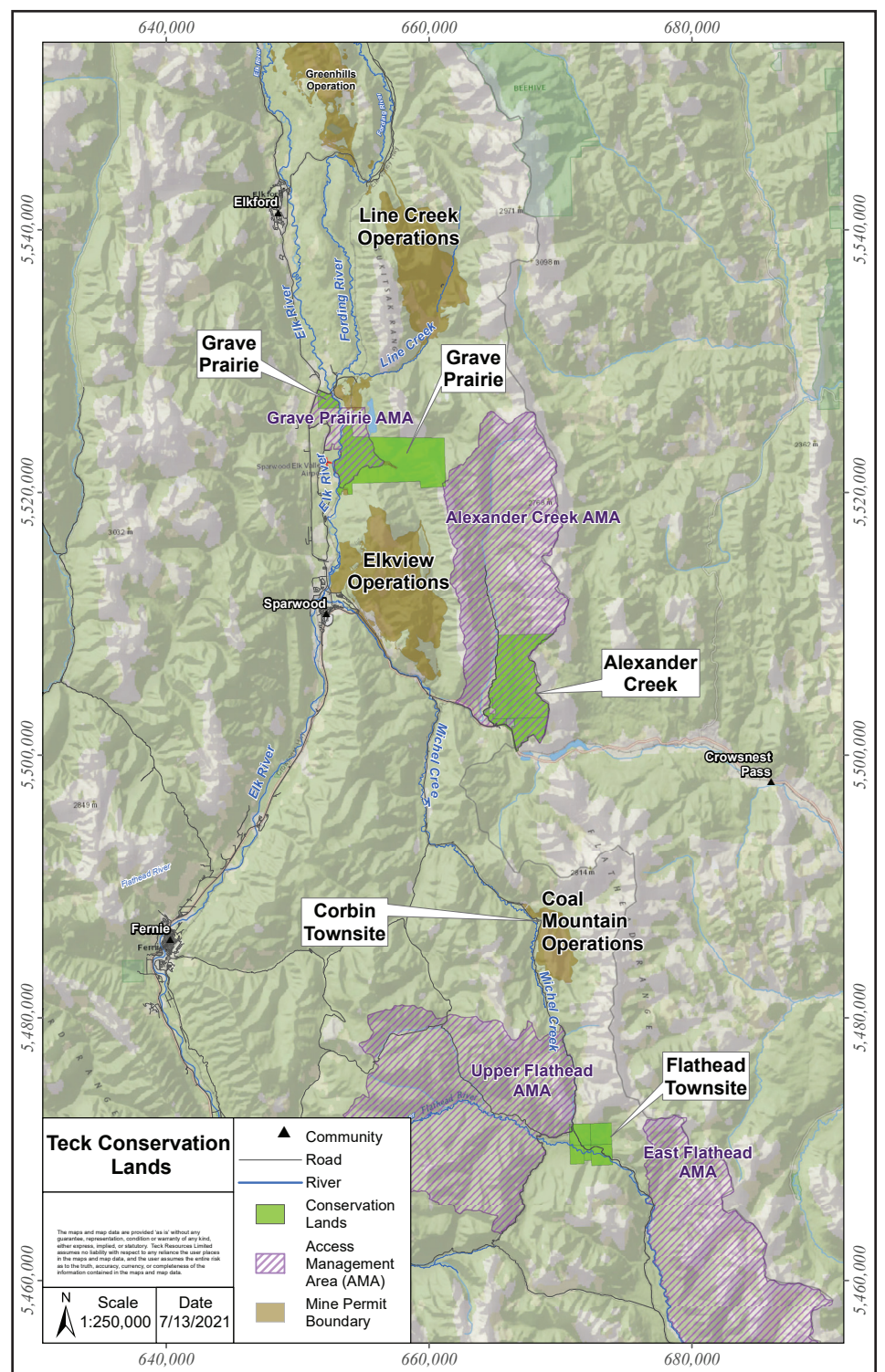
The Teck logo, consisting of the word "Teck" in a bold, blue, sans-serif font.



Teck Conservation Lands

This year, the Ktunaxa Nation and Teck signed a Joint Management Agreement for more than 7,000 hectares of land purchased by Teck in 2013 for conservation. The lands are located in **ʔamakʔis** Ktunaxa and in the region of Teck's steelmaking coal operations in southeast British Columbia.

Under the Agreement, the Ktunaxa Nation and Teck agree to jointly manage the land for conservation purposes protecting significant fish and wildlife habitat. The Agreement will also support the Ktunaxa Nation Stewardship Principles, and Teck's goal to achieve a net positive impact on biodiversity in the areas where it operates. Both parties recognize the importance of ensuring that communities of interest are involved in the conservation planning for the lands consistent with Teck's commitment at the time of purchase.



Teck and the Ktunaxa Nation worked closely with stakeholders to purchase the land in 2013 in the Elk Valley and Flathead River Valley because of its exceptional social, cultural and ecological value. The lands provide important habitat for numerous species, such as grizzly bear, wolverine, badger, elk, lynx, mountain goat, bighorn sheep, westslope cutthroat trout and bull trout, and they hold significant value for local communities.

Please keep conservation in mind when you are enjoying recreation activities on these lands and respect the existing Access Management Areas on the Grave Prairie and Alexander Creek lands. Electronic maps and coordinates at www.teck.com/coalmaps

Road Mitigation and Management Project

At Teck, we are working towards securing a net positive impact on biodiversity by maintaining and/or re-establishing self-sustaining landscapes and ecosystems that lead to viable long-term and diverse land uses in the areas in which we operate.

The Elk Valley has a long history of road construction that has resulted in an extensive road network across the landscape. While roads serve an important purpose at the time of development, and subsequently for a variety of reasons, a high concentration of roads has the capacity to result in negative effects on adjacent habitat, ecosystems and wildlife. Road rehabilitation and management strategies are being explored as part of our efforts to contribute towards a reduction in cumulative impacts on regionally valued ecosystems and wildlife.

In 2020, we gathered feedback from individuals, groups, clubs, alliances and organizations to identify an initial 89 km of potential opportunity roads for rehabilitation within the Upper Fording, Henretta Creek, Chauncey Creek, Greenhills Creek and Dry Creek watersheds that should not impact popular recreational use.

What we heard:

- Start with a focus on roads adjacent to the mines, where possible
- Maintain traditional recreational routes, trails and access, including horse and foot trails
- Rehabilitate roads within, or that provide access to, ungulate overwintering habitat
- Consider rehabilitating side roads and spurs off of main roads, leaving main routes
- Incorporate invasive plant treatment

Benefits of Road Rehabilitation:

- Improved habitat quality
- Reduced wildlife mortality
- Control, eradication and prevention of invasive plant species
- Removed vectors for pollution
- Restoration of hydrological processes and drainage patterns
- Erosion control and reduced sedimentation into water bodies
- Reduced habitat fragmentation and alteration of habitats and ecosystems
- Increased habitat security, availability and quality
- Minimization of ecological impacts and wildlife disturbance
- Increased native species and carbon capture through planting and seeding

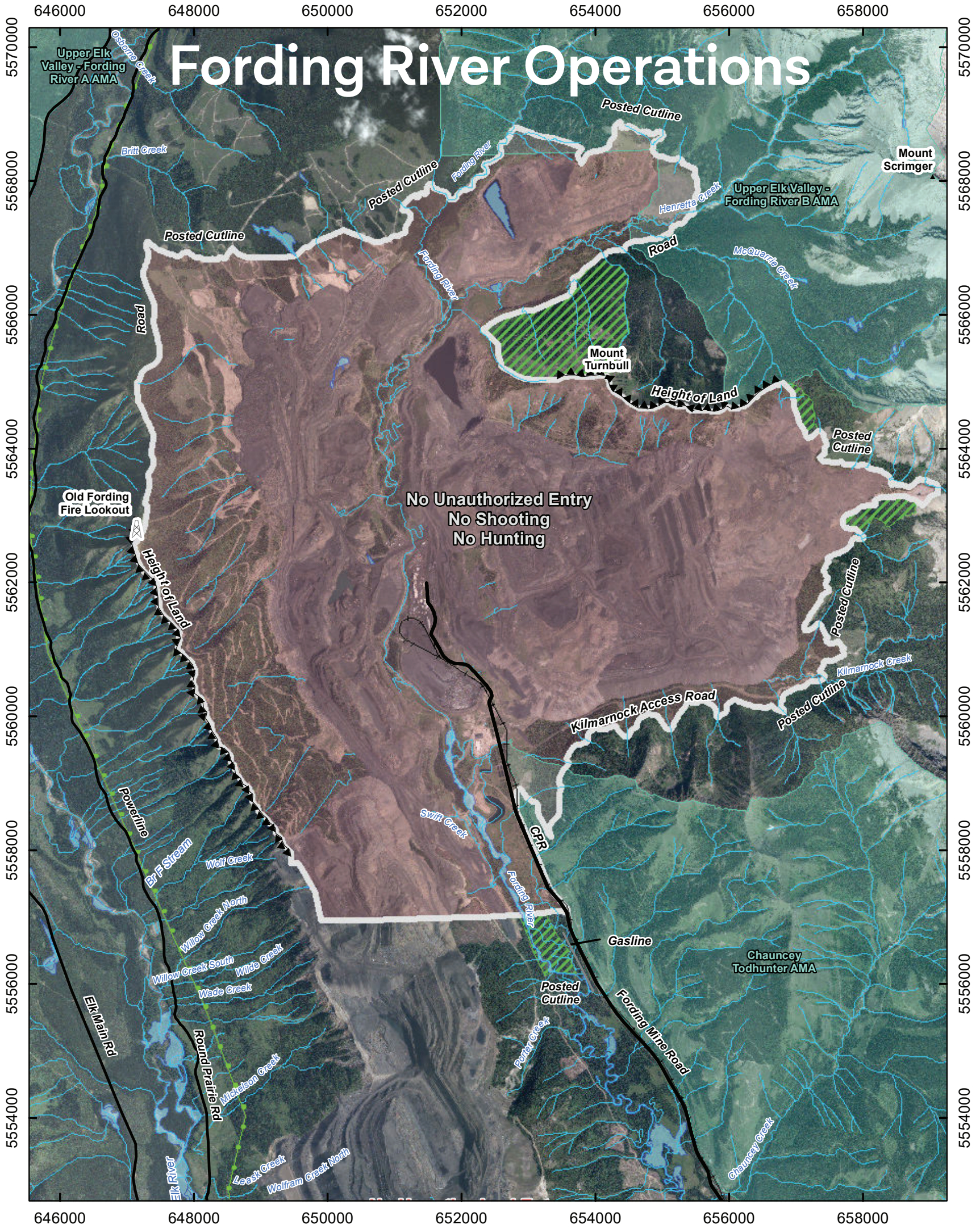
Understanding that field assessments are still required to evaluate current road condition for the purpose of building out rehabilitation plans for each area, work will aim to fully rehabilitate the area through road fill pullback, slope and material stabilization, invasive plant treatment, water management and revegetation techniques enabling the maintenance of natural surface drainage patterns, minimization of soil erosion, growth of native vegetation, and more. Revegetation will include seeding and planting native plant community compositions similar to the surrounding areas.

Fording River Extension Project

The Fording River Extension Project (FRX) is a proposed extension to the existing Fording River steelmaking coal mine located in the East Kootenay region in southeastern British Columbia. The Project represents an opportunity to extend the lifespan of our existing Fording River Operations and maintain the jobs and economic benefits generated by the operation in a socially and environmentally responsible manner.

FRX is currently in the design stage. During this stage, Teck is defining specific aspects of the Project design using feedback gathered from local communities, Indigenous Peoples and government agencies.

Learn more about the future of Fording River Operations at www.fordingriverextension.teck.com



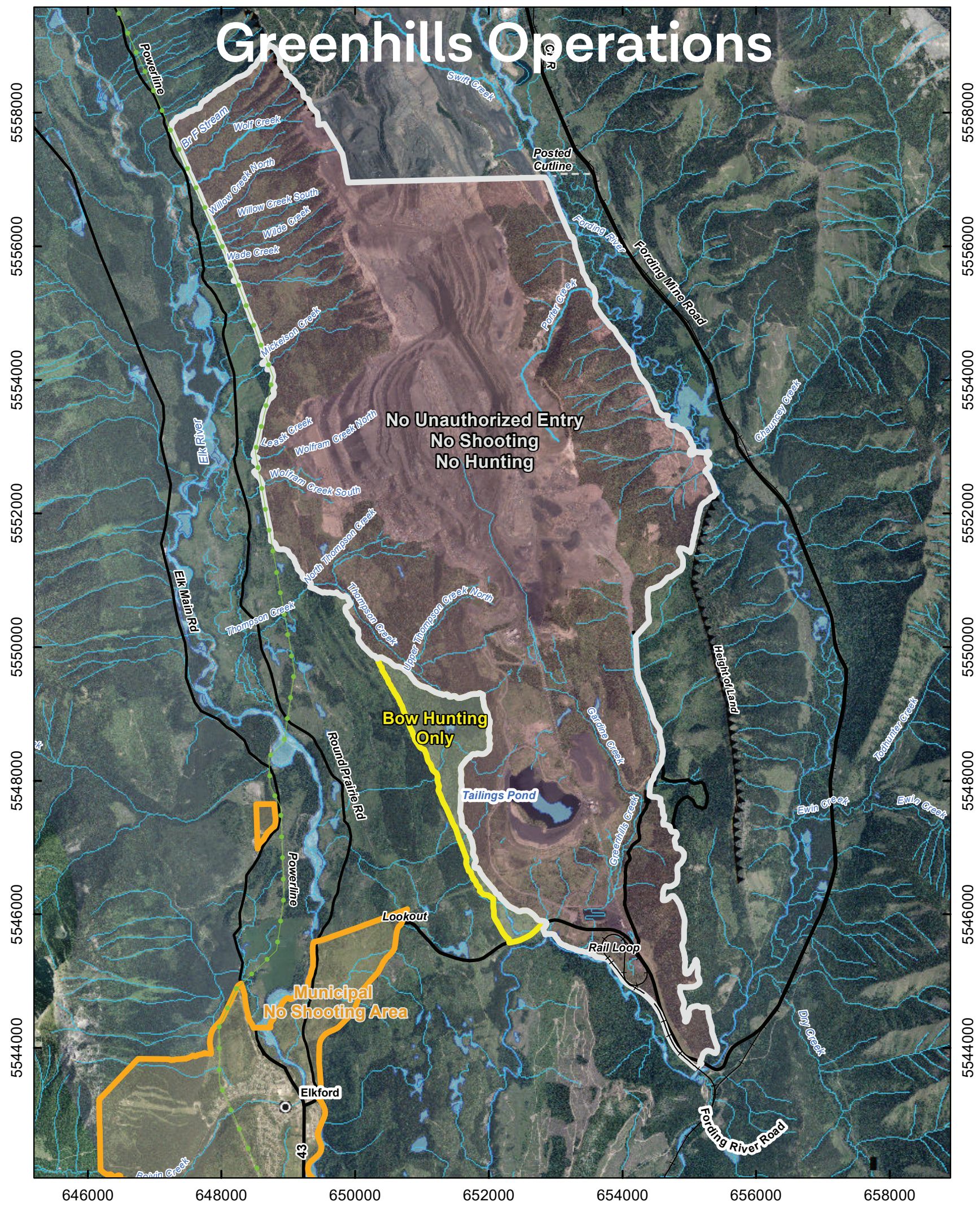
The maps and map data are provided 'as is' without any guarantee, representation, condition or warranty of any kind, either express, implied, or statutory. Teck Resources Limited assumes no liability with respect to any reliance the user places in the maps and map data, and the user assumes the entire risk as to the truth, accuracy, currency, or completeness of the information contained in the maps and map data.

- Fording River Operations 2021**
No Unauthorized Entry Boundary
- Utility Lines
 - Road
 - Water Network
 - Railway
 - ▲ Height of Land
 - Gasline
 - FRO No Unauthorized Entry
 - ▨ Land Returned for Public Use
 - AMA

DATE: 7/13/2021	MINE OPERATION: Fording River
SCALE: 1:60,000	COORDINATE SYSTEM: NAD 1983 UTM Zone 11N

646000 648000 650000 652000 654000 656000 658000

Greenhills Operations



The maps and map data are provided 'as is' without any guarantee, representation, condition or warranty of any kind, either express, implied, or statutory. Teck Resources Limited assumes no liability with respect to any reliance the user places in the maps and map data, and the user assumes the entire risk as to the truth, accuracy, currency, or completeness of the information contained in the maps and map data.

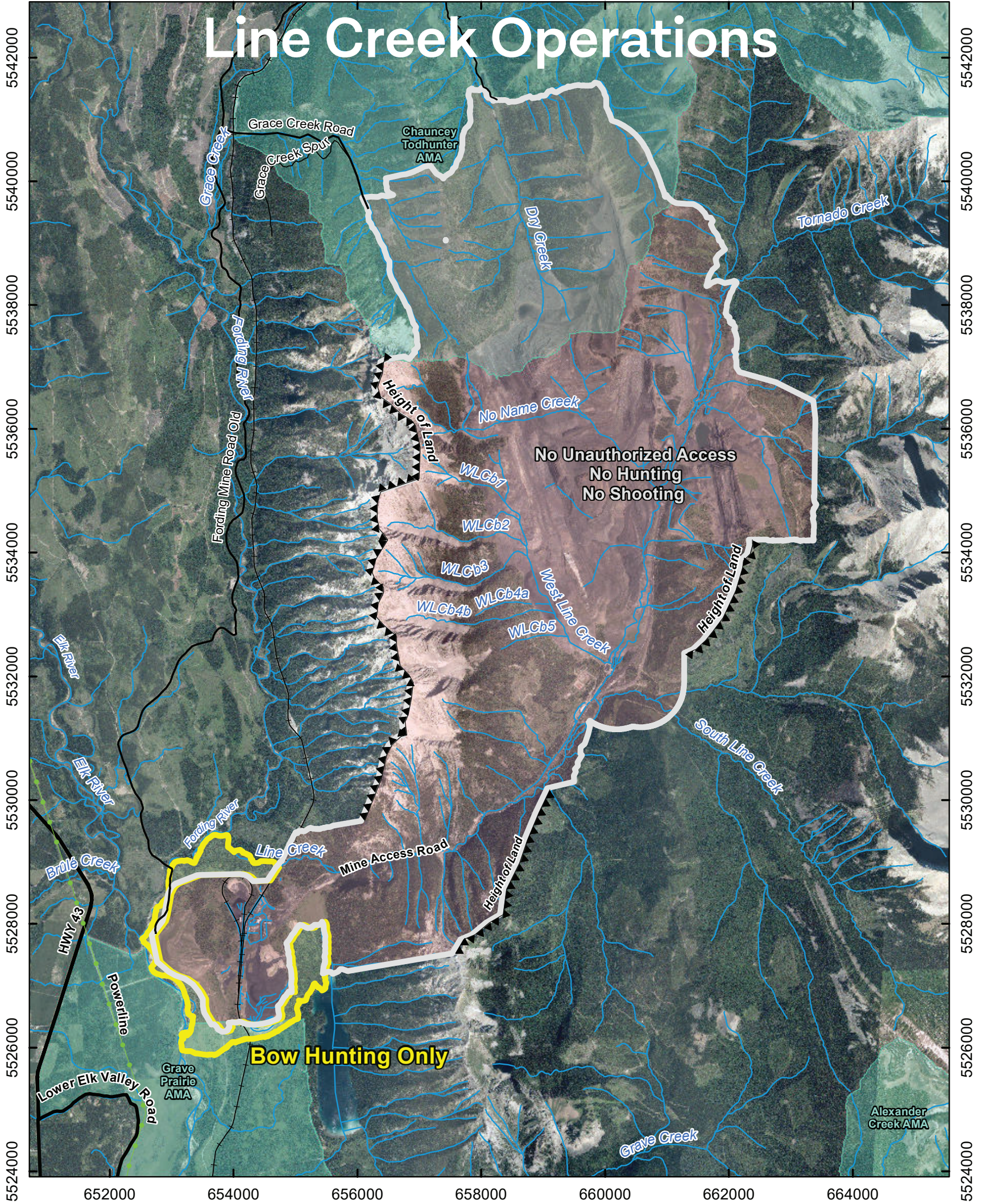
Greenhills Operations 2020 No Unauthorized Entry Boundary

- █ Gate
- Road
- + Railway
- Water Network
- ▭ Municipal No Shooting
- ▭ GHO No Unauthorized Entry
- ▭ No Shooting, Bow Only Zone
- Power Line

DATE: 7/13/2021	MINE OPERATION: Greenhills
SCALE: 1:60,000	COORDINATE SYSTEM: NAD 1983 UTM Zone 11N

652000 654000 656000 658000 660000 662000 664000

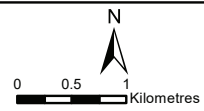
Line Creek Operations



The maps and map data are provided 'as is' without any guarantee, representation, condition or warranty of any kind, either express, implied, or statutory. Teck Resources Limited assumes no liability with respect to any reliance the user places in the maps and map data, and the user assumes the entire risk as to the truth, accuracy, currency, or completeness of the information contained in the maps and map data.

Line Creek Operations 2021 No Unauthorized Entry Boundary

- Gate
- Road
- Watercourse
- Railway
- Utility Lines
- Height of Land
- No Unauthorized Entry
- No Shooting, Bow Only Zone
- AMA



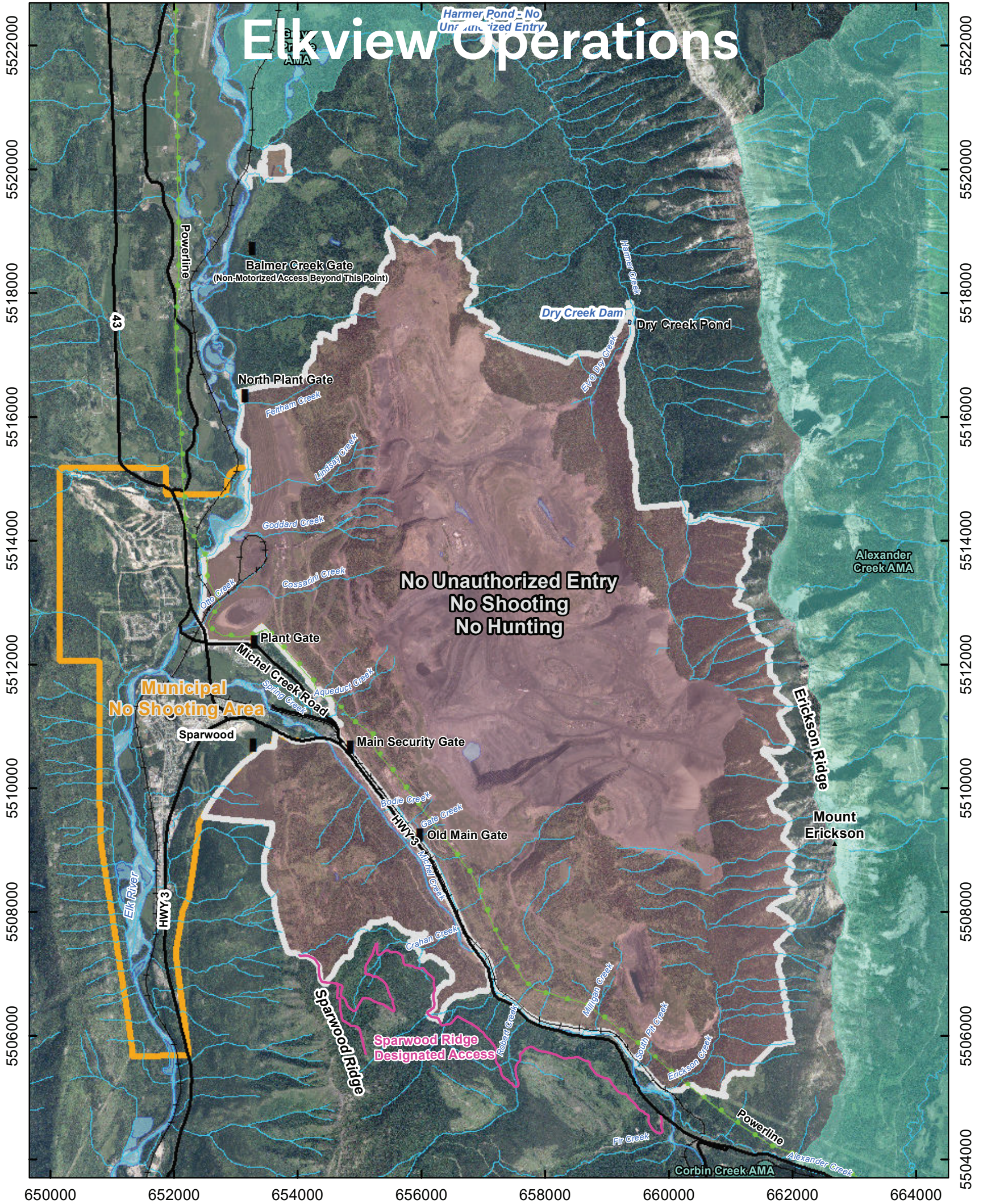
DATE:
7/13/2021

MINE OPERATION:
Line Creek

SCALE:
1:65,000

COORDINATE SYSTEM:
NAD 1983 UTM Zone 11N

650000 652000 654000 656000 658000 660000 662000 664000

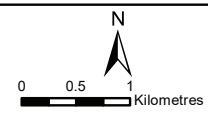


650000 652000 654000 656000 658000 660000 662000 664000

The maps and map data are provided 'as is' without any guarantee, representation, condition or warranty of any kind, either express, implied, or statutory. Teck Resources Limited assumes no liability with respect to any reliance the user places in the maps and map data, and the user assumes the entire risk as to the truth, accuracy, currency, or completeness of the information contained in the maps and map data.

Elkview Operations 2021 No Unauthorized Entry Boundary

- Gate
- Utility Lines
- Road
- Railway
- Water Network
- ▭ Municipal No Shooting
- ▭ No Unauthorized Entry
- ▭ Access Management Area

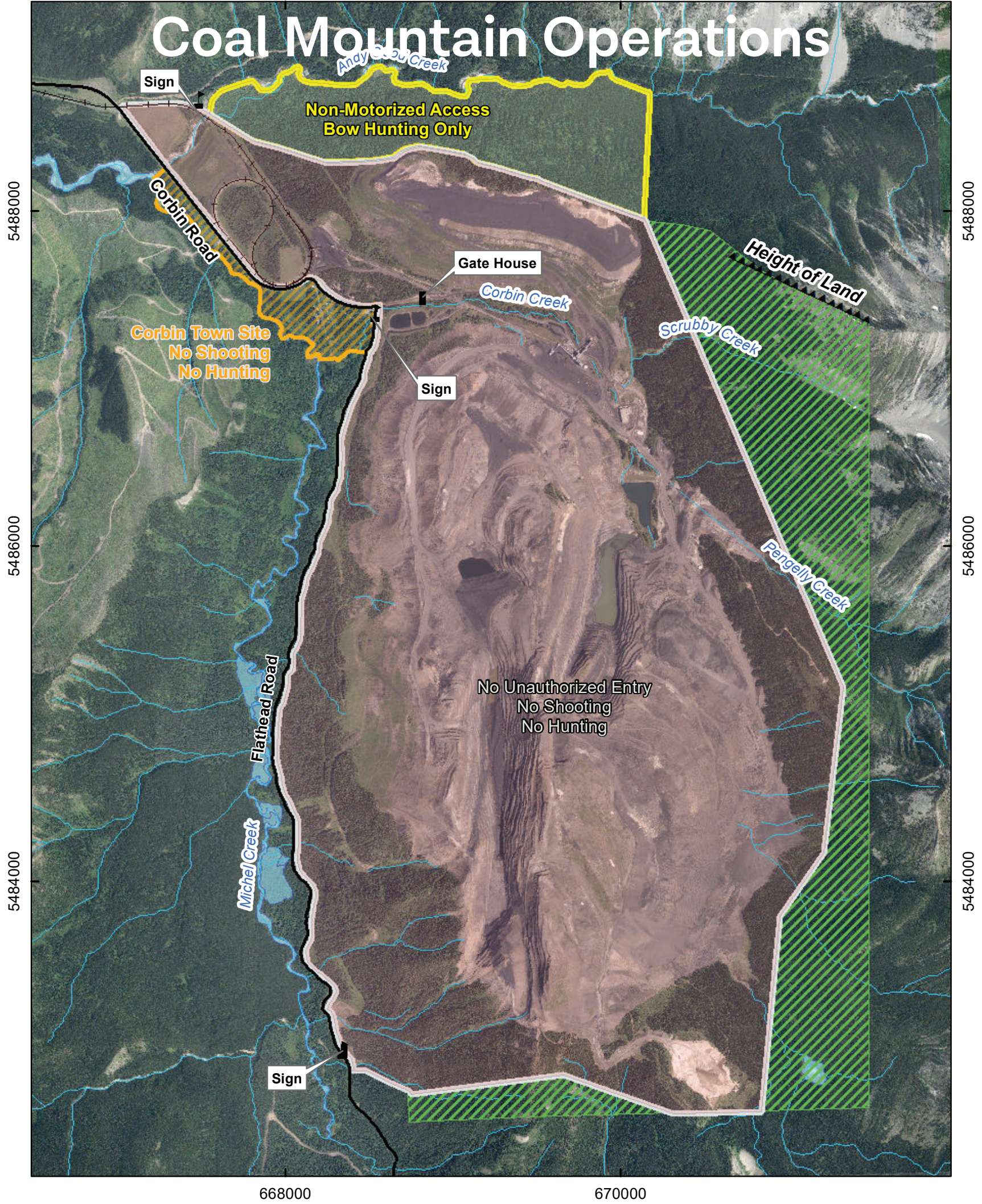


DATE: 7/13/2021	MINE OPERATION: Elkview
SCALE: 1:65,000	COORDINATE SYSTEM: NAD 1983 UTM Zone 11N

668000

670000

Coal Mountain Operations



5488000

5488000

5486000

5486000

5484000

5484000

668000

670000

The maps and map data are provided 'as is' without any guarantee, representation, condition or warranty of any kind, either express, implied, or statutory. Teck Resources Limited assumes no liability with respect to any reliance the user places in the maps and map data, and the user assumes the entire risk as to the truth, accuracy, currency, or completeness of the information contained in the maps and map data.

- Coal Mountain Operations 2021**
No Unauthorized Entry Boundary
- █ Gate
 - ▬ Sign
 - ▬ Railway
 - ▬ Road
 - ▬ Water Network
 - ▲▲ Height of Land
 - ▨ Land Returned for Public Use
 - ▨ Corbin Town Site No Shooting
 - ▨ No Unauthorized Entry
 - ▨ No Motorized Access, Bow Hunting Only

N

0 120 240 480 720 Metres

DATE: 7/13/2021	MINE OPERATION: Coal Mountain
SCALE: 1:24,000	COORDINATE SYSTEM: NAD 1983 UTM Zone 11N