

Teck Access Boundaries in the Elk Valley

2020-21



Securing a Net Positive Impact

At Teck, we are working towards securing a net positive impact on biodiversity in areas affected by our activities.

We work with Indigenous Peoples and local communities in the area to create closure plans focused on supporting the economic and social transition after mining ends, as well as a range of productive post-mining land uses.

This work is guided by our vision of achieving a net-positive impact on biodiversity in the areas where we operate. This means that the ecosystem and biodiversity of the mining area and its broader surroundings will be better off than before the mining occurred. Responsible mine closure and reclamation is a major part of achieving this vision.

Learn more at: teck.com/responsibility

We Want Your Input

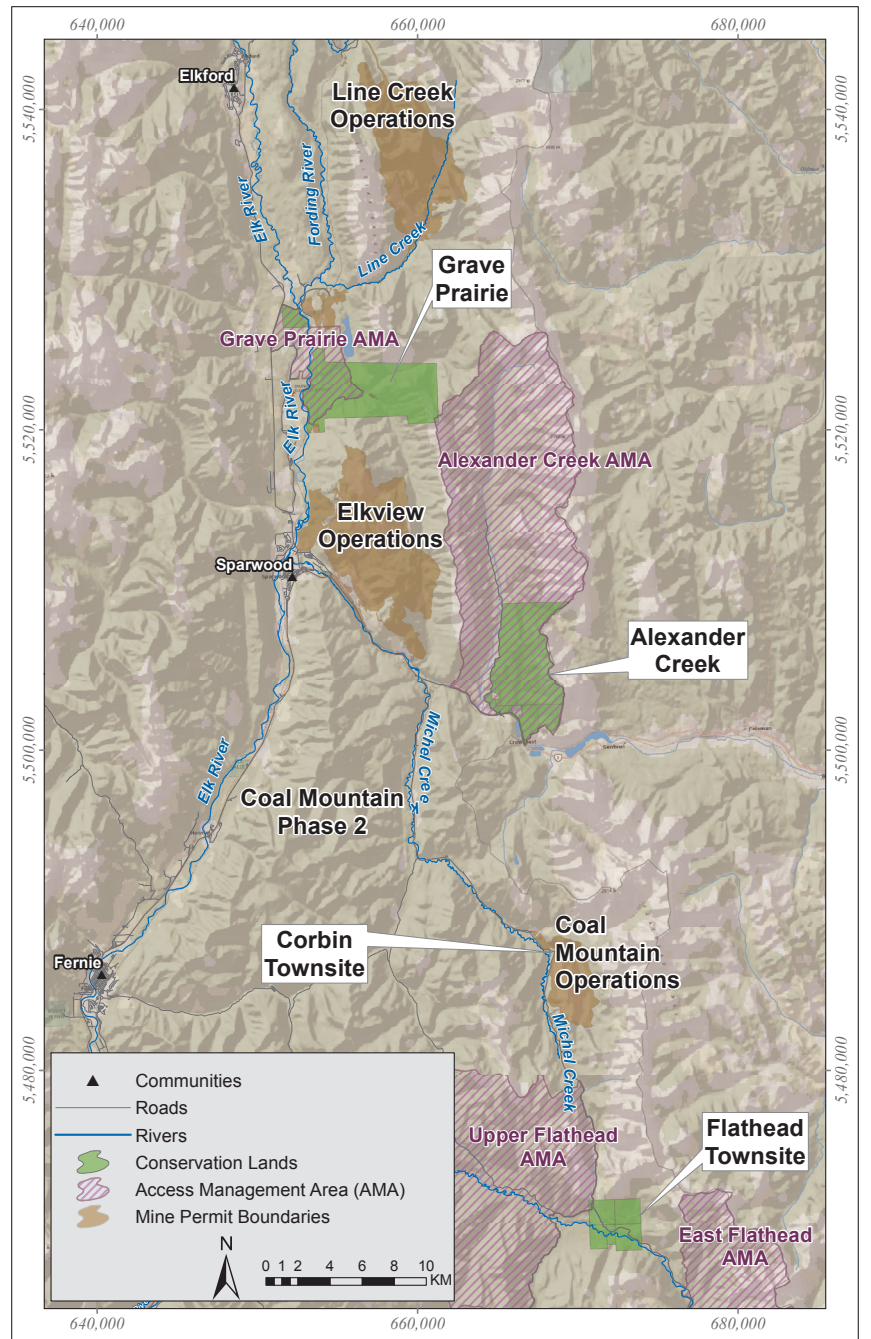
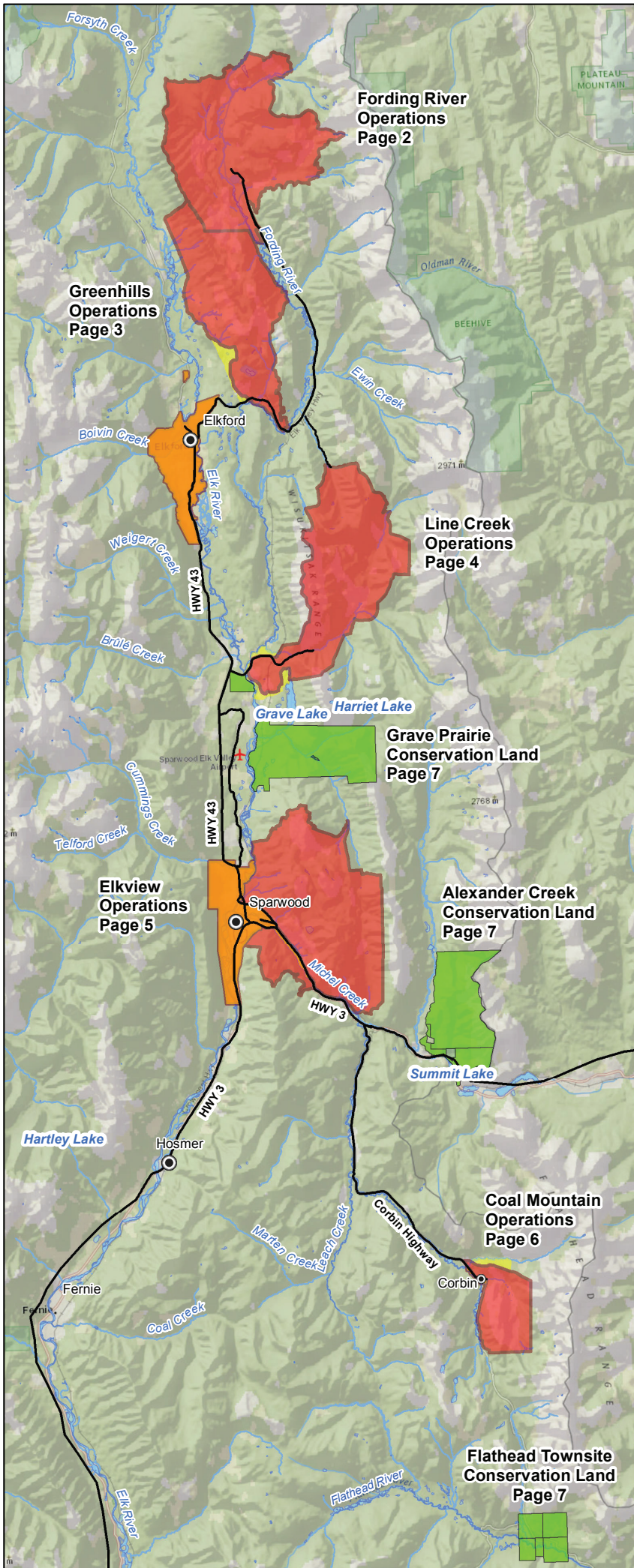
As backcountry users and outdoor recreationalists, your input on trail and land access located on or through Teck land is valuable. As we revisit our No-Unauthorized Entry Boundaries in relation to our evolving mine planning, we want to understand the areas of interest to you, and how we can help facilitate continued safe-use of these areas.

To learn more about upcoming engagement opportunities, please email communicationsteckcoal@teck.com

Join us for our annual backcountry user and outdoor recreationalist meeting on December 2, 2020.

For more information, please email communicationsteckcoal@teck.com, or watch for advertisements on Facebook or The Fernie Free Press, or visit teck.com/coalmaps this November.

Teck

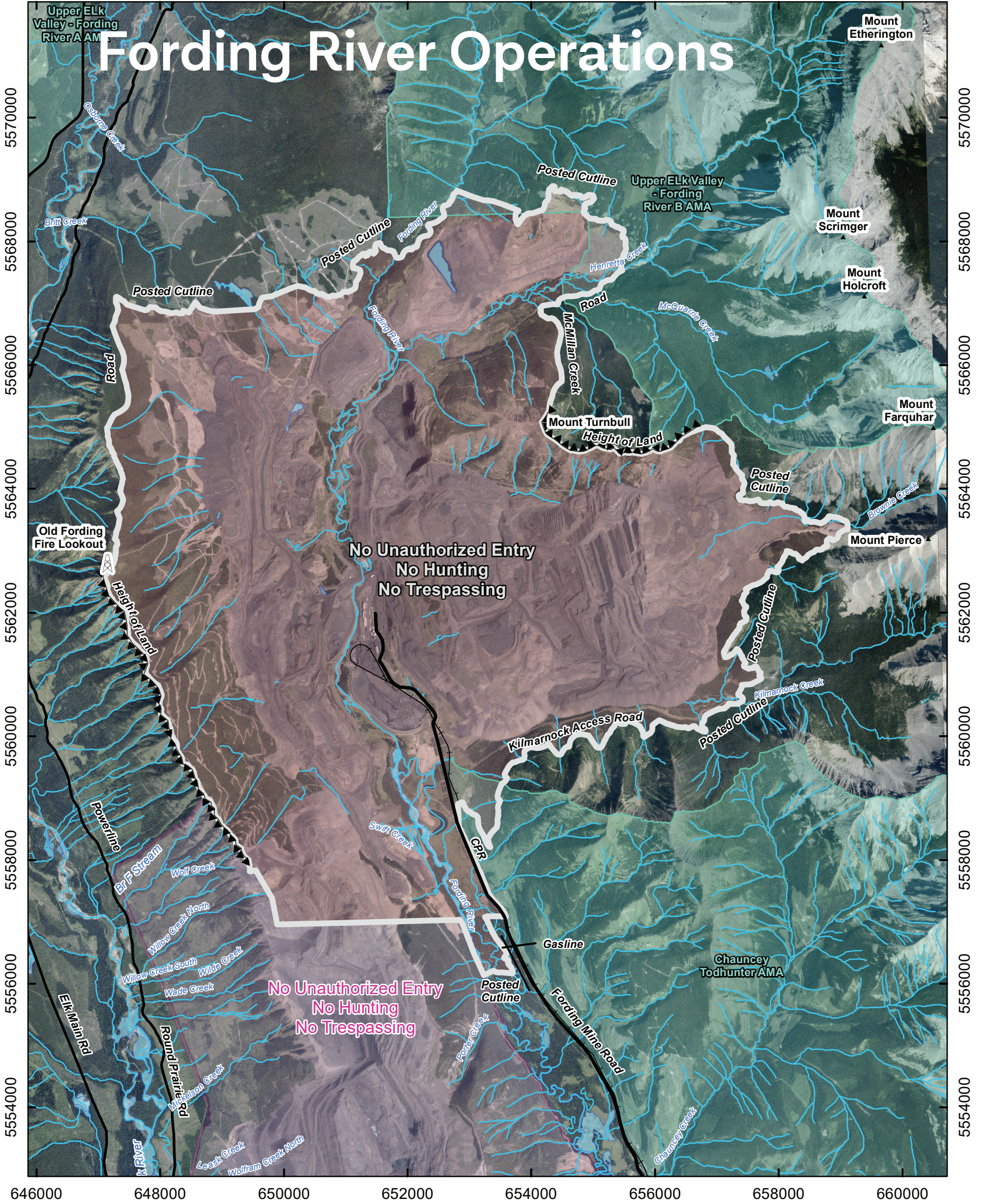


Teck Conservation Lands

Teck will be working in cooperation with First Nations, communities and other stakeholders to develop management plans that focus on the conservation of key habitats for wildlife and fish in the Elk Valley and Flathead River Valley for the future.

Please keep conservation in mind when you are enjoying recreation activities on these lands and respect the existing Access Management Areas on the Grave Prairie and Alexander Creek lands. Electronic maps and coordinates at www.teck.com/coalmaps

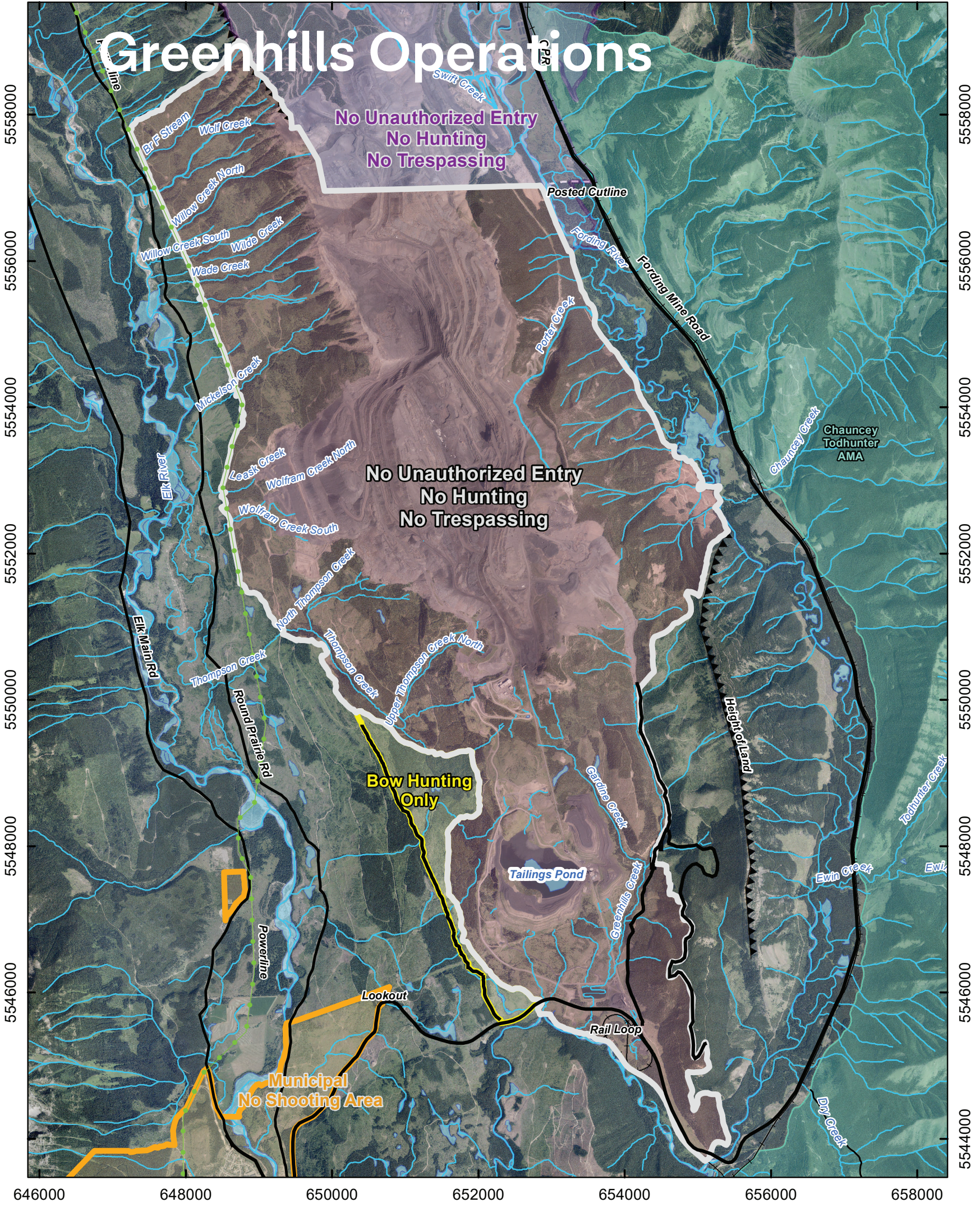
646000 648000 650000 652000 654000 656000 658000 660000



646000 648000 650000 652000 654000 656000 658000 660000

<p>Teck</p> <p>The maps and map data are provided 'as is' without any guarantee, representation, condition or warranty of any kind, either expressed, implied, or statutory. Teck Resources Limited assumes no liability with respect to any reliance the user places in the maps and map data, and the user assumes the entire risk as to the truth, accuracy, currency, or completeness of the information contained in the maps and map data.</p>	<p>Fording River Operations 2020 NUE Boundary</p>		
	<p>— Road</p> <p>+ Railway</p> <p>— Water Network</p> <p>▲▲ Height of Land</p>	<p>■ FRO No Unauthorized Entry</p> <p>■ GHO No Unauthorized Entry</p> <p>■ AMA</p>	
			<p>MINE OPERATION: Fording River</p> <p>COORDINATE SYSTEM: NAD 1983 UTM Zone 11N</p>

646000 648000 650000 652000 654000 656000 658000



646000 648000 650000 652000 654000 656000 658000

Teck
 The maps and map data are provided 'as is' without any guarantee, representation, condition or warranty of any kind, either express, implied, or statutory. Teck Resources Limited assumes no liability with respect to any reliance the user places in the maps and map data, and the user assumes the entire risk as to the truth, accuracy, currency, or completeness of the information contained in the maps and map data.

Greenhills Operations 2020 NUE Boundary		
Gate	Municipal No Shooting	FRO No Unauthorized Entry
Road	GHO No Unauthorized Entry	AMA
Railway	No Shooting, Bow Only Zone	
Water Network		

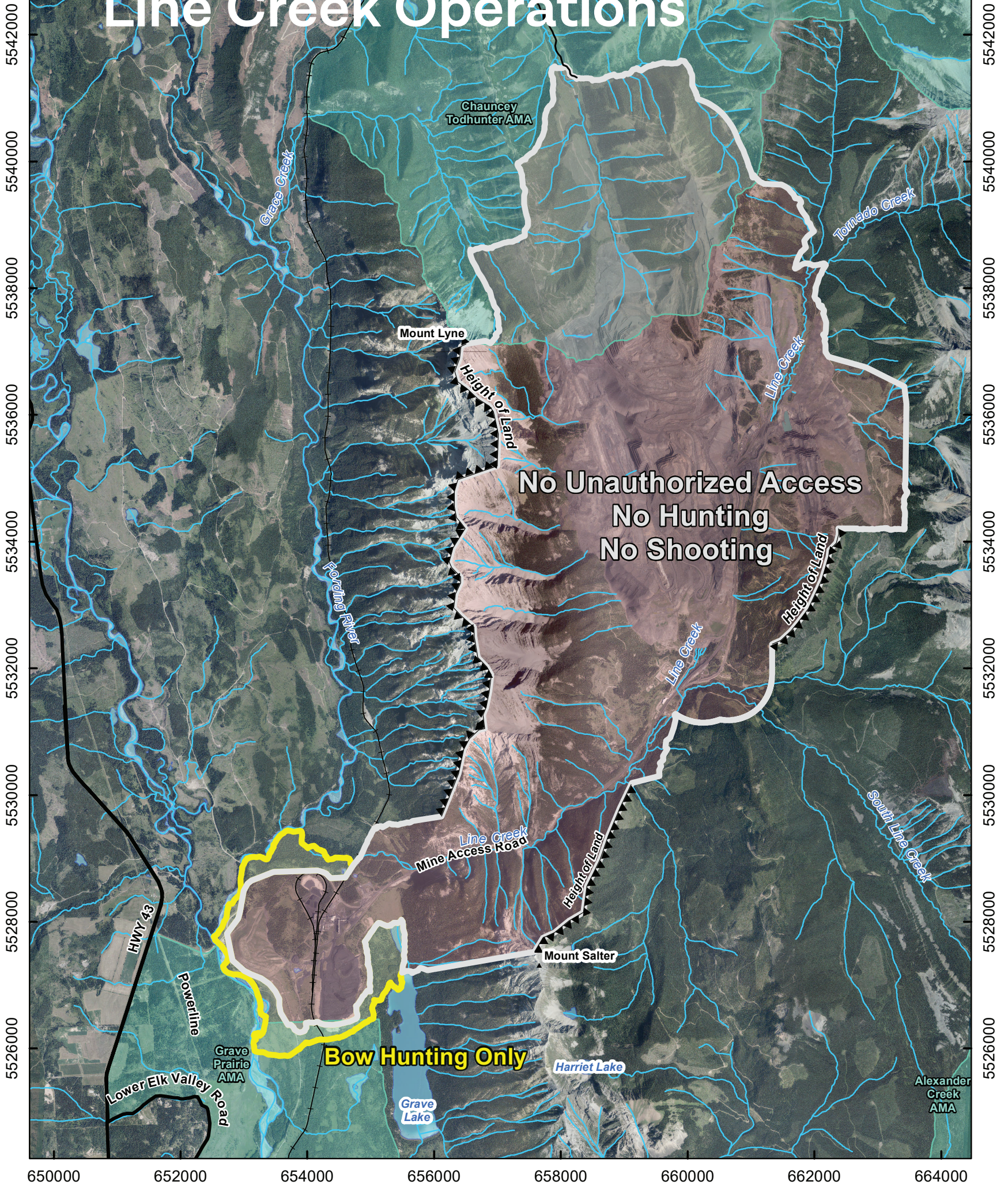
N

0 0.5 1 Kilometers

DATE: 8/11/2020	MINE OPERATION: Greenhills
SCALE: 1:55,000	COORDINATE SYSTEM: NAD 1983 UTM Zone 11N

650000 652000 654000 656000 658000 660000 662000 664000

Line Creek Operations



Teck

The maps and map data are provided 'as is' without any guarantee, representation, condition or warranty of any kind, either express, implied, or statutory. Teck Resources Limited assumes no liability with respect to any reliance the user places in the maps and map data, and the user assumes the entire risk as to the truth, accuracy, currency, or completeness of the information contained in the maps and map data.

Line Creek Operations 2020 NUE Boundary

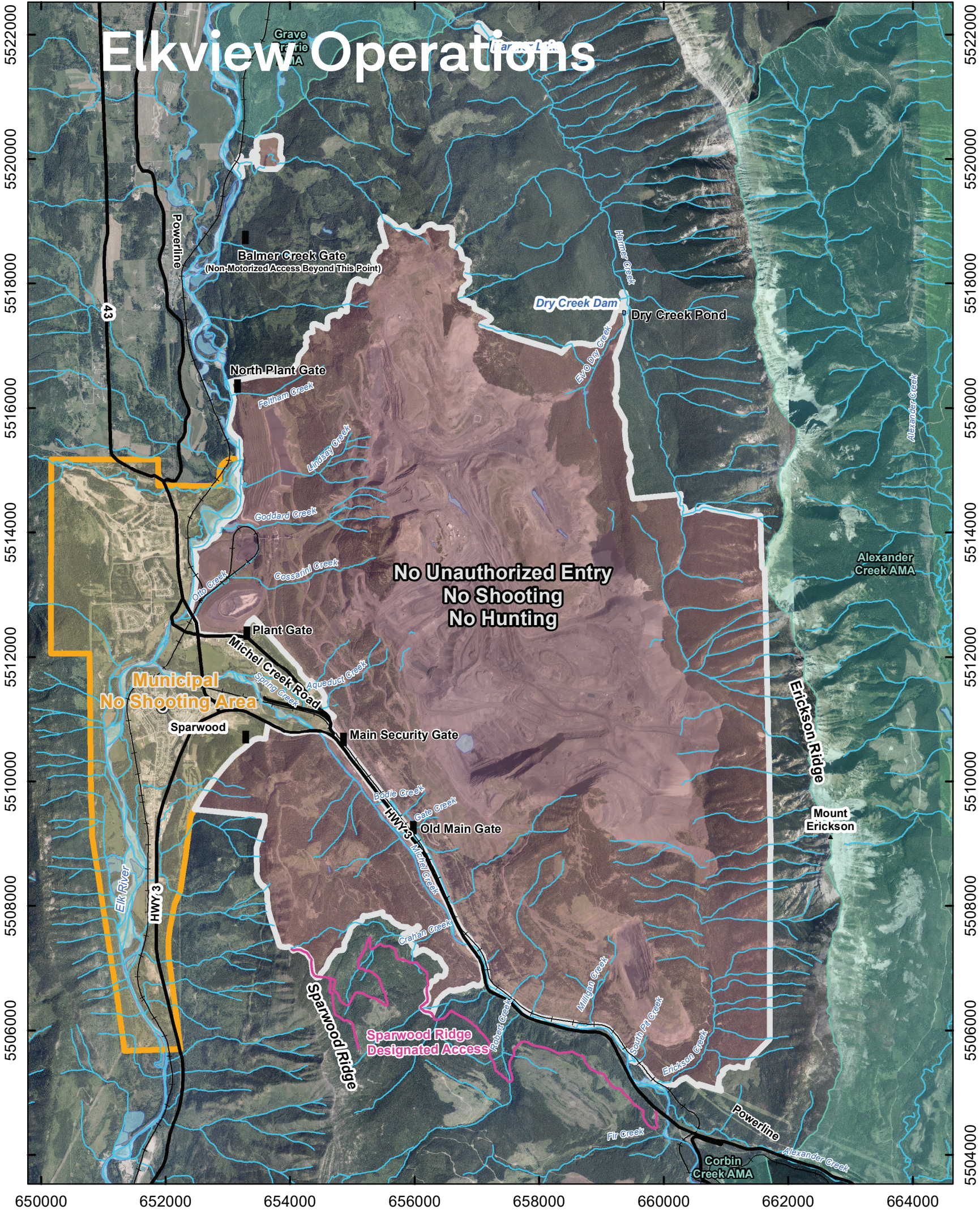
- Gate
- Road
- Water Network
- + Railway
- ▲ Height of Land
- No Unauthorized Entry
- No Shooting, Bow Only Zone
- AMA

N

0 0.5 1 Kilometers

DATE: 8/12/2020	MINE OPERATION: Line Creek
SCALE: 1:65,000	COORDINATE SYSTEM: NAD 1983 UTM Zone 11N

650000 652000 654000 656000 658000 660000 662000 664000



650000 652000 654000 656000 658000 660000 662000 664000

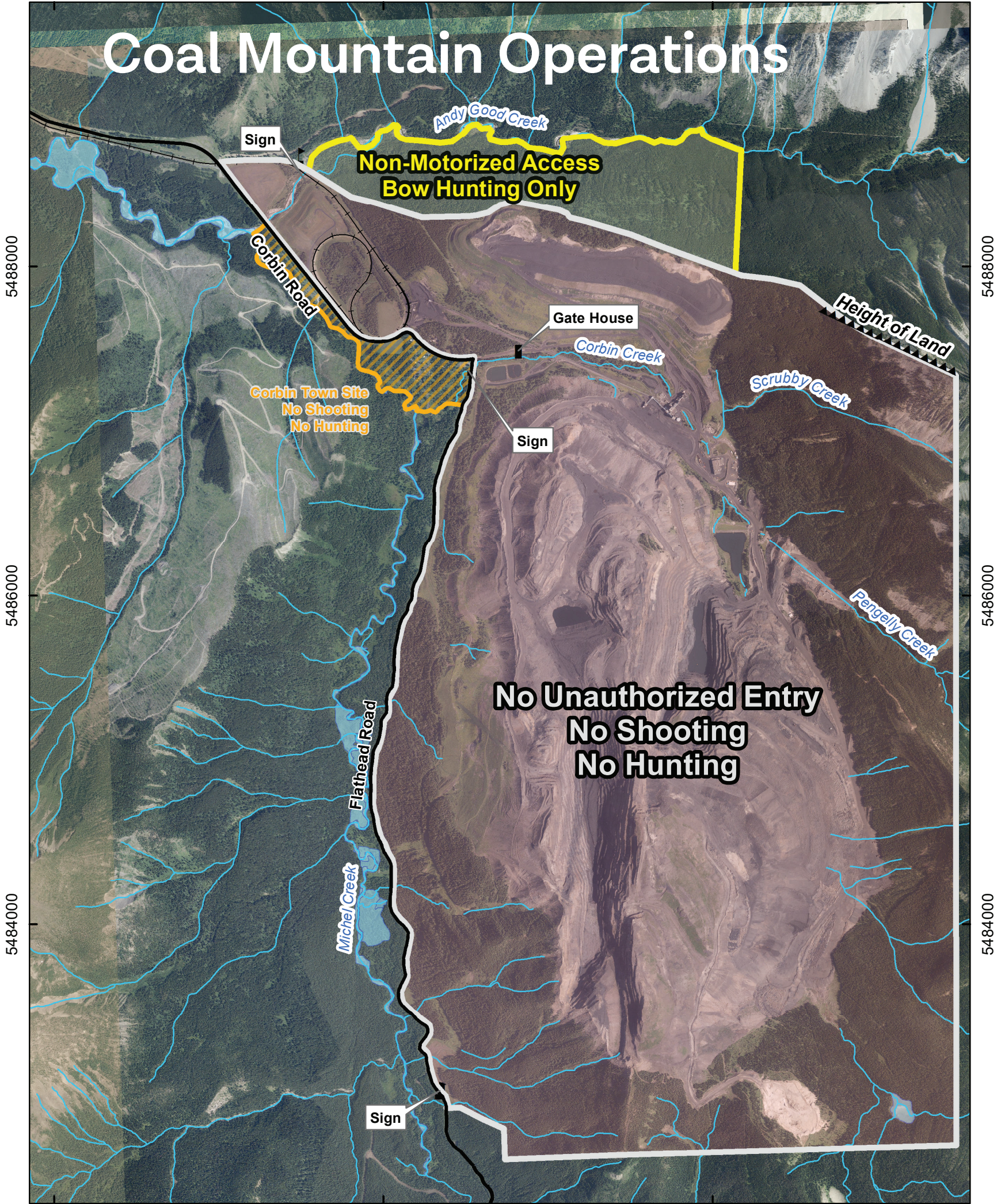
<p>Teck</p> <p>The maps and map data are provided 'as is' without any guarantee, representation, condition or warranty of any kind, either express, implied, or statutory. Teck Resources Limited assumes no liability with respect to any reliance the user places in the maps and map data, and the user assumes the entire risk as to the truth, accuracy, currency, or completeness of the information contained in the maps and map data.</p>	<p>Elkview Operations 2020 NUE Boundary</p>			
	<p>█ Gate</p> <p>— Road</p> <p>—+ Railway</p> <p>— Water Network</p>	<p>▭ Municipal No Shooting</p> <p>▭ No Unauthorized Entry</p> <p>▭ AMA</p>	<p>DATE: 8/6/2020</p> <p>SCALE: 1:65,000</p>	<p>MINE OPERATION: Elkview</p> <p>COORDINATE SYSTEM: NAD 1983 UTM Zone 11N</p>

666000

668000

670000

Coal Mountain Operations



5488000

5488000

5486000

5486000

5484000

5484000

666000




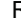
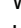




668000

670000

Teck

The maps and map data are provided 'as is' without any guarantee, representation, condition or warranty of any kind, either express, implied, or statutory. Teck Resources Limited assumes no liability with respect to any reliance the user places in the maps and map data, and the user assumes the entire risk as to the truth, accuracy, currency, or completeness of the information contained in the maps and map data.

Coal Mountain Operations 2020 NUE Boundary

-  Gate
-  Sign
-  Railway
-  Road
-  Water Network
-  Height of Land
-  Corbin Town Site No Shooting
-  No Unauthorized Entry
-  No Motorized Access, Bow Hunting Only



DATE: 8/12/2020	MINE OPERATION: Coal Mountain
SCALE: 1:25,000	COORDINATE SYSTEM: NAD 1983 UTM Zone 11N

Promoting Safety On and Off Site with Defined Access Boundaries

For your protection and ours, please observe and follow the No Unauthorized Entry, No Shooting and No Hunting boundaries. Mining activities can start avalanches or rock slides without warning. Maps should be used for reference only. Please follow field signage at all times.

If wounded game crosses the safety boundary, do not follow. You must contact the site Loss Prevention for further instructions.

To prevent spread of noxious weeds please remain on designated trails with vehicles.

Thank you for your cooperation.

Site Information:

Fording River Operations: 250.865.5016 or 250.425.4133

Greenhill Operations: 250.865.3098 or 250.865.3042.

Line Creek Operations: 250.425.3112

To ensure public and worker safety the boundary will move incrementally as the East Rejects Spoil progresses. Teck committed to making this change incrementally in permits for the East Rejects Spoil, in order to allow access for as long as possible. Field signage has been updated—maps should be used for reference only.

Elkview Operations: 250. 425.8899

Coal Mountain Mine: 250.425.7390

Mining at Coal Mountain has now concluded. We have received valuable feedback from our local communities that has been incorporated into our plans. We continue to welcome feedback to inform how the land will be used after mining, considering the values and priorities of regional stakeholders, along with Teck's safety and biodiversity values. Please contact feedbackteckcoal@teck.com or **1.855.806.6851**

Access Updates

Coal Leach Road—Teck has taken action to mitigate the seasonal closure at Coal Leach Road. New culverts and a bridge have been installed to accommodate the spring high water flow while supporting healthy fish movement in Michel Creek.

Have questions or feedback about Teck's Operations in the Elk Valley? Phone toll-free to **1.855.806.6854** and leave a message. Send an email to feedbackteckcoal@teck.com Fill out an online feedback form at teck.com/elkvalley

Wild Food Sampling Program 2020

Help monitor wild food in the Elk Valley

As part of Teck's commitment to responsible mining, we encourage hunters to participate in our Wild Food Sampling Program. Wild foods are an important food source for Elk Valley residents, and the results from the program will help inform our ongoing work to ensure human health and water quality are maintained in the Elk Valley



1. You will need

Marker and freezer bags

2. Fill and seal

Approximately ½ cup of kidney, liver, heart, or muscle tissue—about the size of your fist. One tissue type per bag.

3. Label clearly with this information

- Name
- Date
- Species
- Tissue type
- Location

4. Freeze your sample

Email sampleteckcoal@teck.com or call **250.425.8247** to arrange sample pickup or drop off.

Each sample will equal one entry in our prize draw.

Fording River: Castle Mountain Project

The Castle Project is a proposed extension of Teck's existing Fording River steelmaking coal mine located in the East Kootenay region in southeastern British Columbia. The Project represents an opportunity to extend the lifespan of our existing Fording River Operations and maintain the jobs and economic benefits generated by the operation in a socially and environmentally responsible manner.

To learn more about the Project and to view a map of the project area, please visit: teck.com/castleproject
